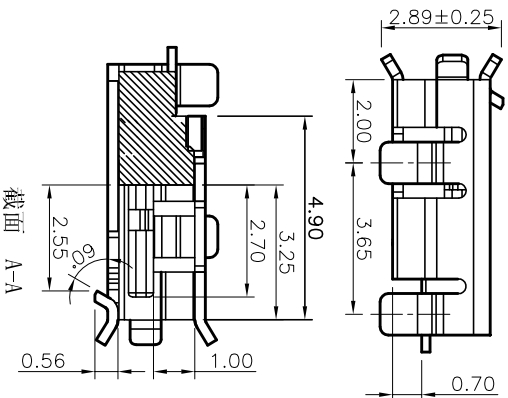
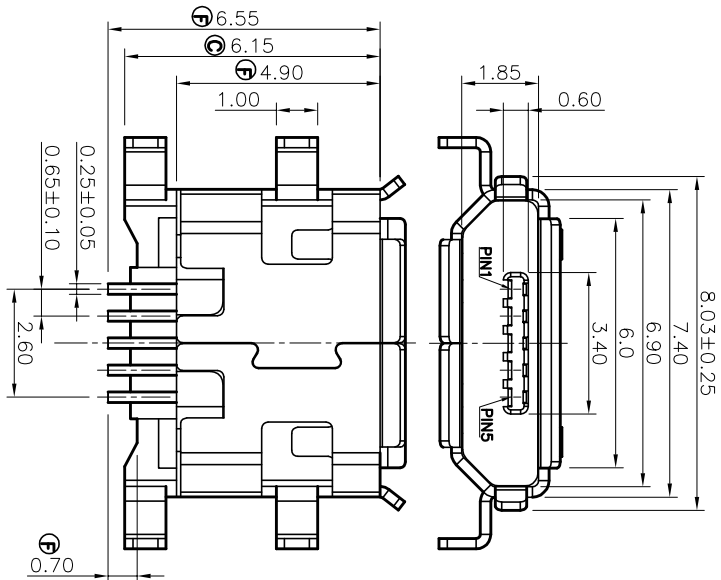
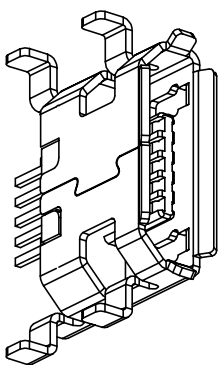


RECOMMEND PCB LAYOUT
TOLERANCE: ±0.05
TOP VIEW



- MATERIALS**
1. HOUSING : HIGE TEMPERATURE THERMOPLASTIC WITH G.F,U194V-0
 2. TERMINAL : COPPER ALLOY, T=0.20mm
 3. SHELL : COPPER ALLOY, T=0.25mm

- SPECIFICATION**
1. CURRENT RATING : 1.0 A. MAX.
 2. DIELECTRIC WITHSTANDING VOLTAGE : 100V AC R.M.S. FOR 1 MINUTE.
 3. INSULATION RESISTANCE : 100MΩ MIN.AT 500V DC.
 4. CONTACT RESISTANCE : 50mΩ MAX.
 5. OPERATING TEMPERATURE : -30°C TO +80°C.
 6. TATAL MATING FORCE :3.57 KGF MAX.
 7. TATAL UNMATING FORCE :1.0 KGF MIN.0.81~2.05 KGF MIN. AFTER 5,000 INSERTION/EXTRACTION CYCLES

DESCRIPTION OF PLATING ON TERMINALS			
NO.	EXPLAIN	NO.	EXPLAIN
0	GOLD FLASH	3	GOLD 15u"
1	GOLD 5u"	4	GOLD 20u"
2	GOLD 10u"	6	GOLD 30u"

GENERAL TOLERANCE		DWG NO.	APPD:	WIND	Scale
X.±0.45	X.±5'	JYSA0413-04	CHKD:		1:1
X.±0.35	X.±2'	Title	DR:		mm
XX±0.25	.XX'±1'	Part NO.	Date		
.XXX±0.15	.xxx'±0.5'				

JYS 杰宇森电子有限公司
JIE YU SEN ELECTRONIC CO., LTD.

REV.	ECH.NO.	MODIFY.CONTENT	DATE
A		NEW	2012/04/13