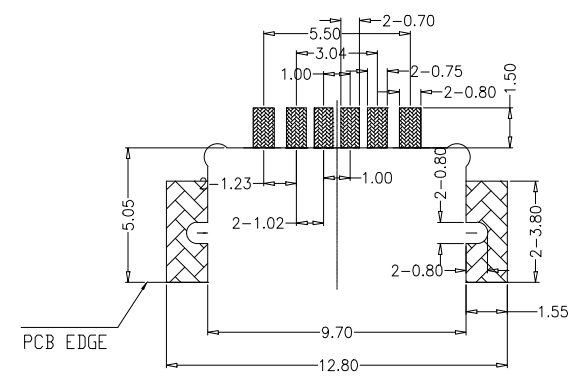
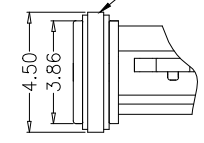
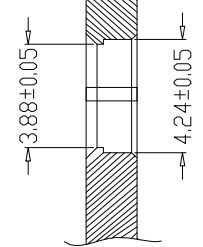
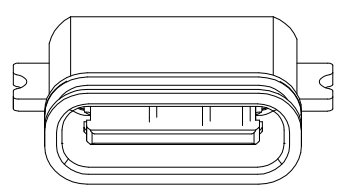
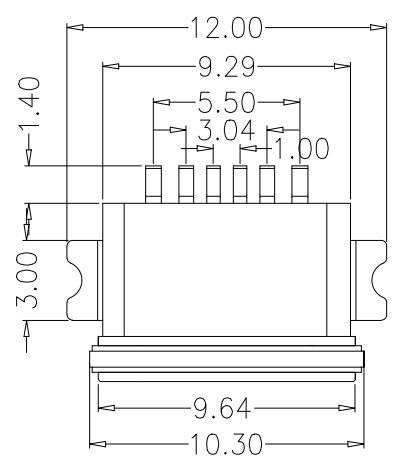


REV.	ECN.NO.	MODIFY.CONTENT	DATE
A		NEW	2020/05/29

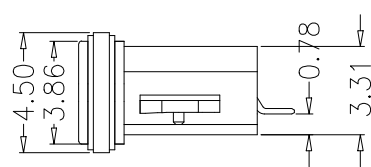
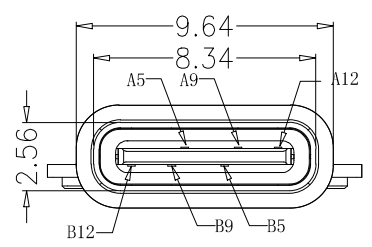
机壳面板

密封圈

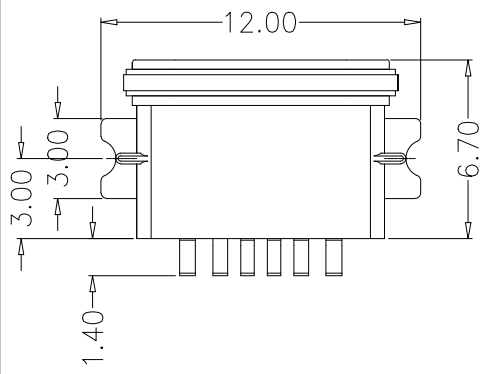
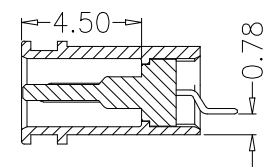
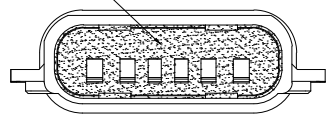
前后组装方式



RECOMMENDED P.C.B. LAYOUT  
TOLERANCE UNSPECIFIED ±0.05mm



此处点胶



B12	GND
B9	VBUS
B5	CC2
A5	CC1
A9	VBUS
A12	GND
PIN	SIGNAL NAME

Note:

1.Material:

- 1.1 Housing: LCP
- 1.2 Contact:C2680,t=0.20mm middleclip SUS t=0.15mm
- 1.3 Shell: Zinc Alloy.

2.ELECTRICAL:

- 2-1:CURRENT RATING:  
VBUS AND GND CONTACTS RATED AT 1.25A PARALLELED FOR A TOTAL OF 3A;
- 2-2:INITIAL CONTACT RESISTANCE :40 MEGOHMS
- 2-3:DIELECTRIC WITHSTANDING VOLTAGE:  
30V AC MIN;
- 3:MECHANICAL CHARACTERISTICS:  
3-1:MATING FORCE:5~20N  
3-2:UNMATING FORCE:8~20N(INITIAL),  
6~20N(AFTER 10000 CYCLES)
- 3-3:FREQUENCY: 200±50 CYCLES /HOUR,10000 CYCLES
- 3-4:OPERATING TEMPERATURE ;-40~80°.

4: WATERPROOF: IP-X7.

GENERAL TOLERANCE		DWG NO.			APPD:	WIND	Scale	1:1
X.±0.45	x.±5°	Title	TYPE-C 6pin 沉板0.8mm 压铸防水母座		CHKD:		UNIT	mm
.X±0.35	.x'±2°				DR:			
.XX±0.25	.xx'±1°	Part NO.	JYS-UTC080-132		Date	2020/05/29		
.XXX±0.15	.xxx'±0.5°							
SHEET	1/1			<b>JYSCONN</b> Shenzhen		JYSCONN Electronics Co., LTD.		